



## TIP OF THE HAT

~ Gail Norris, Human Resources Data Management

### WELCOME TO ISU – SEPTEMBER 2012

- Kevin D. Bersett, Editorial Writer, University Marketing & Communications
- Kevin Lane Colombe, Superintendent of Grounds, Campus Services Division Grounds
- Mandy Lynn Dart, Office Manager, Clinical Experience in Teacher Education
- Amy Jill Horsch, Nurse Practitioner, Health Services
- William D. Leopold, Police Officer, University Police Department
- Alan Lin, Admissions and Records Representative, Registrar
- Jeffrey Alan Lynn, Police Officer, University Police Department
- Patrick James McGuire, Admissions and Records Representative, Registrar
- Monica Lynn Reed, Office Support Specialist, Intercollegiate Athletics
- Jacklyn Marie Russow, Office Support Specialist (EXC), Superintendence
- Nancy Joy Wagler, Office Support Specialist, Mennonite College of Nursing
- Wenjuan Cindy Wang, Accountant II, Comptroller's Office



### PROMOTIONS/RECLASSIFICATIONS – SEPTEMBER 2012

- Florence Buchanon, Administrative Clerk, Financial Aid Office
- Terri Lynn Haerr, Special Events Facilitator, Dean of Students Office
- Kristie Lynn Kowall, Asst Dir of Physical Plant, Superintendence
- Diane M. Leonard, Administrative Clerk, Communication Sci & Disorders
- Sally A Little, Administrative Aide, School of Biological Sciences
- Chandra D. Scott, Customer Service Representative, Illinois Special Olympics
- Sheena Rae Weiss, Accountant III, Comptroller's Office
- Craig Steven Watts, IT Technical Associate, Cmptr Infrastructure Supp Svcs

### RETIREMENTS – SEPTEMBER 2012

- Imelda Mayer, Janitorial
- Sandra A McBride, Health Sciences

### RESIGNATIONS – SEPTEMBER 2012

- Christopher Ryan Bland, eMerge
- Jason Borchardt, Student Technology Suppt Svcs
- Lawrence C. Duffy, Dining Services
- Alyssa Gillespie, Comptroller's Office
- Gregory Miller, Dining Services
- Elizabeth Shoemaker, Dean of Arts and Sciences
- James Alex Swan, Campus Services Div Grounds

### NEXT OPENLINE ARTICLE DEADLINE



The next deadline to submit articles to the OpenLine newsletter will be Wednesday, October 31. Items pertinent to civil service employees can be sent to [cscopenline@ilstu.edu](mailto:cscopenline@ilstu.edu)

## SERVICE AWARDS

~ David Schaafsma, Human Resources IT Technical Associate

### 25 YEARS

- Mark Joseph Schopp, Comptroller's Office, 10/1/1987

### 15 YEARS

- Karen S. Long, University Marketing & Communications, 10/13/1997
- Judy A. Moss, Dining Services, 10/27/1997
- Joyce Lynette Parmenter, Dean of Business, 10/21/1997



### 10 YEARS

- Cristan E. Embree, Research & Sponsored Programs, 10/9/2002
- Desarae Topolski, Dining Services, 10/22/2002

## POTPOURRI

~ Civil Service Council

### SYMPATHY – OUR SINCERE SYMPATHY TO:

- Candace Gustavson, Admissions, on the passing of her son, Chris Gustavson, on July 25, 2012.
- Tricia Reimer, Office of the Registrar, on the passing of her brother, Terry Plue, on September 10, 2012.
- Jeanne Thompson, Admissions, on the passing of her husband, Richard Lee Thompson, on September 22, 2012.

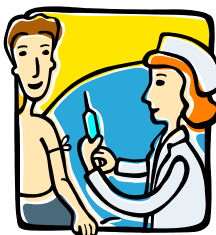


~~~~~  
*Your help in providing Potpourri information is needed and appreciated. Feel free to voluntarily provide Potpourri information, taking note of the article deadlines printed in each issue. Report births, marriages, or deaths of immediate family members via email to [cscopenline@ilstu.edu](mailto:cscopenline@ilstu.edu). Notifications are not verified by birth, marriage, or death certificates.*

## FACULTY/STAFF FLU SHOTS AVAILABLE

~ Laura Knoblauch, Student Health Services

Student Health Services is offering flu shots to current Illinois State faculty/staff (while supplies last). Please come prepared to show your ISU ID and your insurance card.



Please call (309) 438-2778 to schedule an appointment. New this year - Faculty/Staff may schedule flu shot appointments online at [healthservices.illinoisstate.edu/appointments](http://healthservices.illinoisstate.edu/appointments) / (Only Faculty/Staff are eligible to schedule flu shot appointments.) There will be a \$25 no show fee for anyone who doesn't keep their appointment.

Your flu shot is free if you are currently a State of Illinois employee and are covered by any State of Illinois employee group insurance plan as the primary insured.

Your flu shot is \$27 if you are a State of Illinois employee who is not listed as the primary insured on a State of Illinois health insurance plan.

Please visit: [healthservices.illinoisstate.edu/](http://healthservices.illinoisstate.edu/) for more information.

## CHILDREN'S HOLIDAY PARTY

~ Kathleen Webster, Civil Service Council

The Civil Service Council, A/P Council and University Events will join forces to bring you the annual Children's Holiday Party on Sunday, December 9, from 2 to 4 p.m. at Horton Field House.

Children and grandchildren of all Illinois State University faculty, staff, retirees and current students are welcome to attend. **Children MUST be accompanied by an adult.** The Gamma Phi Circus will once again provide entertainment along with our special guests Reggie Redbird, Santa and Mrs. Claus. Children will have an opportunity to talk with Santa and have a picture taken, if desired. Other activities will include the popular inflatable jumping stations and a craft booth staffed by students from the ISU School of Theatre. Cookies and punch will also be provided.



This year we will be accepting can good donations for the local food pantries. Your generosity will be appreciated by those in need during the holidays.

The event is free; however, **we MUST receive reservations by Monday, November 26, 2012.**

Advance registration is important so we may have plenty of refreshments for everyone and enough goody bags for all children ages 12 years and under.

Please register at: [UniversityEvents.IllinoisState.edu/holiday](http://UniversityEvents.IllinoisState.edu/holiday) and use your ULID and password to log into the registration form. You may also call University Events at (309) 438-8790 for reservations or email [universityevents@ilstu.edu](mailto:universityevents@ilstu.edu) for further details or questions.

## FALL FUNDRAISING EFFORTS

~ Lois Soeldner, Civil Service Council

The Civil Service Councils wants to thank everyone who attended the Fall Picnic on the Plaza. It was a beautiful day for a picnic and a great way to kick-off the sale of our raffle tickets.

Another big thank you goes out to those people who braved a cold and rainy morning to buy Krispy Kreme doughnuts on the north quad. Proceeds from the day's sale of doughnuts were divided between the Civil Service and A/P Councils' Scholarship Funds.



Make sure you buy your raffle tickets before the drawing on December 4, 2012. A list of prizes may be found on our website: [cscouncil.illinoisstate.edu](http://cscouncil.illinoisstate.edu) All proceeds of the tickets sales go to the scholarship funds.

## SECA DATES REMINDER

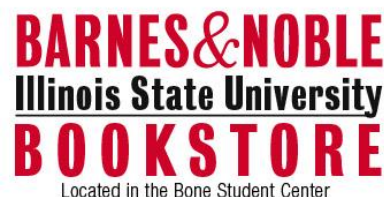
~ Linda Spencer, SECA Committee

The 2012 SECA (State and University Employee Combined Appeal) Campaign runs from September 7 to November 4, 2012. Every Civil Service Employee at ISU is given the opportunity to choose an organization or several organizations and make a donation to that organization through SECA.

For more information, contact your department liaison or Linda Spencer at [ljspenc@ilstu.edu](mailto:ljspenc@ilstu.edu)

## MORE EMPLOYEE DISCOUNT OFFERS

~ Civil Service Council



10% discount to all ISU faculty and staff on most non-textbook items.

20% departmental discount offered on many items including clothing, gifts and supplies. (Must have department authorization if using the bookstore's ISU department charge account or use your ISU department credit card).

Contact Anne Harner at BSC location if you are interested in ordering small or large quantities of ISU customized clothing, gifts, or promotional items.

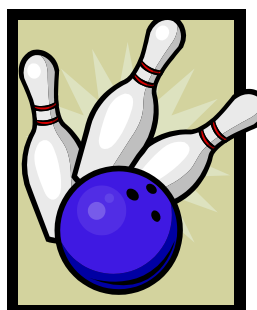
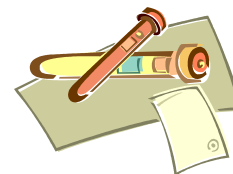
Stop by the BSC location to pick up a 10% discount card that can be used for most items at the Barnes & Noble Superstore in Bloomington.

## TREAT YOURSELF TO WELLNESS

~ Erin Link, Health Promotion and Wellness

### Cholesterol & Blood Chemistry Screening

Cholesterol and blood screening will be available on Thursday, October 18 from 7:30-9 a.m. in the 2<sup>nd</sup> floor lab of Student Services Building. Cost of screening is \$60. Appointments required. To register, call Tracey at (309) 438-1882 or email [vpsatsloner@exchange.ilstu.edu](mailto:vpsatsloner@exchange.ilstu.edu)



### Family Bowling

Families are invited to a free bowling event sponsored by Health Promotion and Wellness on Saturday, November 3. Reservations are available in 90 minute time slots at 1, 2:30 and 4 p.m. One family per lane and space is limited! Register today at [Wellness.IllinoisState.edu](http://Wellness.IllinoisState.edu) or by calling (309) 438-WELL (9355).



### Healthy You, Healthy Earth 2012

Your environment plays a huge role in overall wellness. For more than 10 years, Health Promotion and Wellness and the Office of Sustainability have hosted Healthy You, Healthy Earth Wellness and Sustainability Fair. Join us on Wednesday, November 14 from 10 a.m. to 3 p.m. in the Brown Ballroom. Attend presentations, visit with local exhibitors and register for prizes! For more information, visit [Wellness.IllinoisState.edu](http://Wellness.IllinoisState.edu)

**CLASSIFIED ADVERTISEMENTS**

**For Sale:**

- Used Jupiter 462L Baritone; just cleaned; all springs in valves, corks, and felts replaced; first \$400 takes it. Call (309) 663-1029.
- SLR camera, 35mm, 35-70 lens, \$50. Call (309) 829-1385.

**Personal Service:**

- Radon mitigation IL-licensed, insured, free estimates. 2400+ successful installations, 100% satisfied customers. David Smith Radon Remedies 1-800-838-1352.

- Elite Chiropractic & Rehab – Unique chiropractic care, customized physical rehab, and spinal decompression for disc problems. Call today for appointment. (309) 663-9900.



- Roofing, siding, windows, painting, remodeling, porches, decks, and miscellaneous home repairs. Licensed, bonded, and insured. Call Mark at Boolman Homes (309) 829-6263.

**OpenLine Classified Ad Submission Form**

*All information must be printed clearly.*

First and Last name: \_\_\_\_\_

Employment status: Full time / part time / retired / \_\_\_\_\_

Home phone: (\_\_\_\_\_) \_\_\_\_\_ - \_\_\_\_\_

ISU phone: \_\_\_\_ - \_\_\_\_\_

Best time to reach you at your home phone: \_\_\_\_\_

E-mail: \_\_\_\_\_

Campus Box/Dept: \_\_\_\_\_

Check one category:

- Free Items (\$2)
- For Sale-Auto (\$5)
- For Sale-Other (\$2)
- Personal Service (\$5)
- Wanted (\$2)

**ONE word per box. 20 words or less.**

|  |  |  |  |
|--|--|--|--|
|  |  |  |  |
|  |  |  |  |
|  |  |  |  |
|  |  |  |  |
|  |  |  |  |

Make checks payable to: Civil Service Council - *OpenLine*.

Send this completed form and payment  
 by the published classified ad deadline to:

**Maureen Peel, 1100 VP Finance & Planning, 438-5152**

For more information about advertising in the *OpenLine*  
 visit [www.cscouncil.illinoisstate.edu/openline/](http://www.cscouncil.illinoisstate.edu/openline/)

**NOTE: The Civil Service Council does not endorse any of the product(s) or service(s) included in the Classified Ads section of the OpenLine newsletter.**