

OpenLine

OpenLine is published monthly by the Civil Service Council of Illinois State University, Campus Box 1300, Normal, IL 61790-1300.

JANUARY 20, 2004

VOLUME XXVIII, NUMBER 7

DATES TO REMEMBER

January 25.....Next classified ad deadline
 February 2.....Groundhog Day
February 3.....Council meeting
 February 3.....Next *OpenLine* article deadline
 February 14.....Valentine's Day
 February 16.....Presidents' Day
February 17.....Council meeting
 February 19.....Founders Day

INSIDE

Biennial Conference for Women p. 2
 Recreation Services & U Golf Course p. 2
 Classified Advertisements p. 2
 Conditions for Submitting Ads p. 2
 University Policies/Procedures p. 3
 Service Awards p. 3
 History Mystery p. 3
 Wellness Program p. 3
 A Thank You Note p. 3
 Civil Service Council Representatives p. 4
 History Mystery Answer p. 4
 Contact Us p. 4

STAFF

EDITOR Pam Burress
 COPY EDITOR Narry Kim
 COUNCIL LIAISON Vicki Bryan

IMPORTANT INFORMATION FOR CIVIL SERVICE PERSONNEL

-TAMMY CARLSON

A recent article in the local paper may have created some confusion regarding potential increased costs for pensions for state employees. The Civil Service Council wanted to make certain that employees knew the recent publicity did not apply to Illinois State University employees.

UNIVERSITY PRESIDENT INTERVIEWS

-MARTHA BURK

Interviews for our next University President are coming up and all Civil Service staff members are invited to participate in two sessions for each candidate! Four candidates (names to be announced shortly before the interviews) are scheduled on Feb. 2-13 according to the following:

Candidate:	<u>First</u>	<u>Second</u>	<u>Third</u>	<u>Fourth</u>
Day 1:	Feb. 2	Feb. 4	Feb. 9	Feb. 11
Day 2:	Feb. 3	Feb. 5	Feb. 10	Feb. 12
Day 3:	Feb. 4	Feb. 6	Feb. 11	Feb. 13

Civil Service staff are invited to attend the Open Forum on the second day of each candidate's visit (Feb. 3, 5, 10, and 12) at 2:45-3:45 pm in the Ballroom at the Bone Student Center. The candidate will make a presentation, followed by a question and answer discussion with University staff.

On the third day of each visit (Feb. 4, 6, 11, and 13) there is a session from 8:30-9:30 am in the Old Main Room of the Bone for **all Civil Service staff** to meet with the candidate. This is just for us and is a great opportunity to meet candidates, ask questions, and form opinions about who we would like in this job. Evaluation forms will be provided to fill out after each session.

Don't miss this – as Civil Service employees and University community members, it is very important that we participate in this process. It is necessary to show that we are a vital part of the university and that the choice of a president is very important to us. I believe that every CS employee at Illinois State has something valuable to contribute to this process!

FRIVOLOUS FACTS

President George Washington owned foxhounds named DRUNKARD, TIPLER and TIPSY.

[Source: www.angelfire.com/pa/trivialneatstuff]



Quick Quote

-MARTIN LUTHER KING JR.

We must learn to live together as brothers or perish together as fools.

Continued on page 2...

...Continued from page 1.

For your information: The Civil Service Council is also being asked to have lunch with the candidates on the third day of each interview. This is something entirely new and shows that the Civil Service staff as a whole is gaining ground in being taken seriously.

Please come to the Open Forum and the Civil Service meeting on the third morning at 8:30 am - we need your participation!

BIENNIAL CONFERENCE FOR WOMEN

--SUSAN STILLWELL

Announcing, the next Biennial Conference for Women will be April 8 and 9, 2004 at the Assembly Hall at the University of Illinois in Urbana-Champaign (www.theconferenceforwomen.com).

Begun in 1984, the Biennial Conference for Women is a forum designed to enlighten, inspire and empower women by focusing on issues unique to their interests and growth. As an attendee, you will have the unique opportunity to hear several influential speakers discuss a variety of life-enriching topics.

Registration and information about speakers, schedules, ticket prices, seating and availability is located on the conference web site.

RECREATION SERVICES AND UNIVERSITY GOLF COURSE

--JOHN STRATMAN

Leisure University CLASSES	Class Dates	Sign-up Ends
Wilderness First Aid	Jan. 22, 29, Feb. 5, 12	Jan. 21
Lifeguard Training	Jan. 26, 28, Feb. 2, 4, 9, 11, 16, 18, 23, 25	Jan. 23
Aerobic Instruction Training	Feb. 1, 8, 15	Jan. 29

Outdoor Adventure Program TRIPS	Trip Dates	Sign-up Ends
Cross Country Skiing, Shabbona, IL.	Jan. 31	Jan. 27

Spaces for these classes are limited so sign up now. You may register by phone with a credit card or walk in at the Student Recreation Building, 500 N. Beech St., or at the Outdoor Store at 220 N. Main St. For more information, prices, or to register please call 438-PLAY.

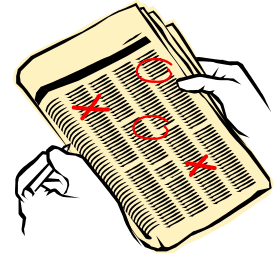
CLASSIFIED ADVERTISEMENTS

For Rent

- Ad removed for Web display as per the Illinois State University policy governing commerce on the Web (8.2.10).

“Introductory” Advertising Rates: Auto \$5, Personal Service \$5, all other categories \$2.

To submit an ad: Complete the Classified Ad Submission Form. Send or deliver the form and payment to Pat Schnitker, 4040 Graduate School, Hovey 310. Ad must be received by the 25th of the month (i.e. October 25 for November OpenLine)



OpenLine Classified Ad Submission Form

All information must be printed clearly.

First and Last name: _____

Home phone: (____) _____ - _____

ISU phone: 8-_____

Best time to reach you at your home phone: _____

Email: _____

Campus Box/Dept: _____

Check one category:

- Free Items Personal Service
 For Sale-Auto Wanted
 For Sale-Other

ONE word per box. 20 words or less.

Abbreviations

AC = Air Conditioning	GC = Good Condition	PW = Power Windows
AT = Auto Transmission	Lrg = Large	RD = Rear Defroster
BR = Bedroom	LR = Living Room	Rm = Room
CC = Cruise Control	Mos = Months	S6 = Sleeps/Seats 6
DR = Dining Room	MR = Moon Roof	Sz = Size
EC = Excellent Condition	9P = 9 Passenger	SR = Sun Roof
EM = Email	PL = Power Locks	W&D = Washer and Dryer
FM = Family Room	PS = Power Seats	

SEND THIS COMPLETED FORM AND PAYMENT TO PAT SCHNITKER, 4040 GRADUATE SCHOOL.

CONDITIONS FOR SUBMITTING ADS

Only Illinois State University employees and retirees may submit ads. There is a limit of ONE ad per employee or retiree, per issue. The ad must be resubmitted for each issue it is run. The appropriate fee must be included with each submission form. Ads must be submitted on the Ad Submission Form, located in the OpenLine or on the Council website, photocopies are acceptable. No ads will be accepted over the telephone. One item or service allowed per submission form. Ads must be 20 words or less. Ads will not be accepted for travel, credit cards, real estate, financial, .com, nude, personals, and firearms to stay within accepted University practices and statutes. Ads will appear in the next OpenLine, space permitting. Any ad not run due to space limitations will be held and appear in the following OpenLine; if you wish to cancel the ad the individual who submitted the ad must contact Pat Schnitker. Refunds will only be given if the ad was held for the following edition and canceled prior to the submission deadline for that issue. Only your first name, home phone number, and email will appear in the ad, no ISU numbers will be published. OpenLine and the Civil Service Council are not responsible for any item or service advertised. The OpenLine staff and Civil Service Council reserves the right to restrict, edit or refuse any advertisement.

UNIVERSITY POLICIES / PROCEDURES

1.1.3 REASONABLE ACCOMMODATION PROCEDURES

Illinois State University is committed to providing equal access to employment and educational opportunities for persons with disabilities. Illinois State University recognizes that individuals with disabilities may need reasonable accommodations to have equally effective opportunities to participate in or benefit from university educational programs, services and activities, and to have equal employment opportunities. Illinois State University shall adhere to all applicable federal and state laws, regulations and guidelines with respect to providing reasonable accommodations as necessary to afford equal employment opportunity and equal access to programs for qualified persons with disabilities. Questions regarding reasonable accommodations and/or discrimination on the basis of disability should be directed to the ADA/504 Coordinator in the Office of Diversity and Affirmative Action. (www.diversity.ilstu.edu) (Pursuant to 28 CFR §35, 29 CFR §1630, 34CFR§104).

Please visit www.policy.ilstu.edu for more information on this topic.

SERVICE AWARDS

--TOM FOWLES

Service Award information is provided by the Human Resources Office.

30 YEARS

- ❖ Daniel John Sepesy, 6380 Classroom Technology Sup, 1/14/1974

25 YEARS

- ❖ Connie M. Fletcher, 3420 Unv Mktg & Communications, 1/8/1979
- ❖ Scott Kevin Landis, 3420 Unv Mktg & Communications, 1/2/1979
- ❖ George William Rhodes, 9100 Facilities Management, 1/10/1979

20 YEARS

- ❖ Colette Sue Homan, 1300 Office Of Human Resources, 1/3/1984

15 YEARS

- ❖ Georgia Lynn Bennett, 4000 VP & Provost's Office, 1/9/1989
- ❖ Linda Darlene Green, 2540 Health Services, 1/3/1989
- ❖ Nancy Ann Guither, 2660 Redbird Arena, 1/3/1989
- ❖ Steven Jay Lancaster, 2610 Food Service, 1/22/1989
- ❖ Penny Diane Stephens, 2660 Redbird Arena, 1/23/1989

10 YEARS

- ❖ Kathryn Ann Anderson, 2660 Redbird Arena, 1/10/1994
- ❖ Harry E. Andres Jr., 9000 Office of Energy Management, 1/5/1994
- ❖ Donna J. Beckett, 2540 Health Services, 1/10/1994
- ❖ Shane E. Brown, 9000 Facilities Management, 1/24/1994
- ❖ Cindy L. Caldwell, 4950 Applied Social Research, 1/31/1994
- ❖ Lori June Devore, 8900 Milner Library, 1/24/1994
- ❖ Jesus Diaz, 9100 Facilities Management, 1/31/1994
- ❖ William Warren Hoffmann, 3470 Admin Information Systems, 1/18/1994
- ❖ Jeanette A. Hughes, 2610 Food Service, 1/24/1994
- ❖ Jerry L. Malak, 3470 Admin Information Systems, 1/3/1994
- ❖ Kevin J. Sparrow, 2610 Food Service, 1/18/1994

HISTORY MYSTERY

This building was once the "Redbird" IGA Foodliner and once a University museum. The University acquired this building in 1987.

[Answer on back page.]

WELLNESS PROGRAM

--NIKKI GEGEL

Employee Fitness Program

Spring fitness program activities begin January 12. We are offering badminton, fitness lab, land aerobics, lap swimming, water classes, lap swimming, T'ai Chi, table tennis and yoga.

Family Swim:

1/24, 2/8: 1-3 pm Metcalf Pool

No More Diets Support:

1/26: Noon-1pm Moulton 102 C

Nutrition, Stress & Abnormal Eating:

1/30: Noon-1pm DEG 551

Back Health:

2/4 & 2/18: Noon-1 pm DEG 551

Blood Chemistry Screening:

2/6: 7:30-9:30 am Felmley Hall Annex 331

Understanding Children's Temperament:

2/17: Noon-1pm DEG 551

Please contact the HR Customer Service Center at 438-8311 to register for any of the above sessions. Registration forms are located on our Web site (www.hr.ilstu.edu/wellness). For further information, visit our Web site or contact either Brandi Rock at 438-7003 or Nikki Gegel at 438-8845.

Body Acceptance Month 2004

Searching for Self: A collage of poetry, music, movement, and text. This entertaining and poignant performance is being written and performed by ISU students under the direction of Cyndee Brown (Assistant Professor in the School of Theatre). It is a thought-provoking commentary on the difficulty of finding self.

Performances:

Sunday, February 1 at 4pm, 6pm, and 8pm, Old Main Room
Monday, February 2 at 7pm and 9pm, Old Main Room

Sponsored by Illinois State University Body Acceptance Coalition and the Women's Project, the Body Acceptance Coalition sponsors programs addressing body image issues. The 2004 Body Acceptance Month performances are appropriate for anyone concerned with the issues surrounding body image and eating disorders. Everyone is welcome to attend! Please contact Nikki Gegel at 438-8845 or Dianne Feasley at 438-8515, for further information.

A THANK YOU NOTE

Hello Civil Service Council Members!

I want to thank you all so much for choosing me as one of the recipients of the Civil Service Scholarship. The money is much appreciated and was/will be put to great use in purchasing school-related items. You are all very gracious for expending your time on such a noble cause as giving out a scholarship to students in need.

Thank you again!

Shanna Casey, Freshman, Elementary Education

**CIVIL SERVICE COUNCIL
REPRESENTATIVES
2003-2004**

--VICKI BRYAN

GROUP I:

Pat Schnitker, 438-2109, plschnit@ilstu.edu
Christa Lawhun, 438-5611, cllawhu@ilstu.edu
Vicki Bryan, 438-2782, vlbryan@ilstu.edu

GROUP II:

Elaine Thoennes, 438-5742, ecthoen@ilstu.edu
Theresa Sanchez, 438-8499, tasanch@ilstu.edu
Jan Jolyn Staley, 438-7261, jjstaley@ilstu.edu

GROUP III:

Jack Wylie, 438-8011, jdwylic@ilstu.edu
Julie Caplinger, 438-7582, jacapli@ilstu.edu
Doris Shaw, 438-8712, djshaw@ilstu.edu

GROUP IV:

John Moss, 436-9966, jlmoss@ilstu.edu
Paul Collins, 436-9966, pvcoll@ilstu.edu
Andy Monninger, 438-2035, camonni@ilstu.edu

GROUP V:

Melody Palm, 438-2222, mapalm@ilstu.edu
Martha Burk, 438-3474, mjburk@ilstu.edu
Steven Lancaster, 438-2042, sjlanca@ilstu.edu

HISTORY MYSTERY ANSWER

The following services are located in the **Instructional Technology and Development Center**: Center for the Advancement of Teaching, Faculty Technology Support Services (FTSS), Opscan Evaluations, and the University Assessment Office.

This building was formerly called Instructional Technology Services (ITS).



CONTACT US

Please feel free to contact any Council member if you have questions, comments, or ideas so that we may better serve you. Any campus activities or information that would be relevant to Civil Service personnel can also be submitted.

Send information to the Council officers (cscouncil@ilstu.edu), to the *OpenLine* editor, Pam Burress (paburre@ilstu.edu), to our Council liaison, Vicki Bryan (vlbryan@ilstu.edu), or to any other Council member prior to the deadline (posted in the "Dates To Remember" column on page 1).

